

DENIZEN

RETAIL SPACE FOR LEASE » PORTLAND, OREGON



LOCATION 518 NE 20th Avenue between Hoyt and Glisan in Portland, Oregon

AVAILABLE SPACE
Retail 1 & 2: 2,038 SF
Retail 3: 3,696 SF plus outdoor patio
Retail 4: 1,612 SF plus outdoor patio

RENTAL RATE Call for details

- COMMENTS**
- New construction, mixed-use project located in the vibrant intersection of Portland's eastside industrial district with the lush, historic Laurelhurst neighborhood (212 market rate apartments above ground floor retail).
 - Modern architectural design with clean lines, large glass storefront systems and high ceilings.
 - Retail 3 & 4 offer Type 1 venting and outdoor patio seating opportunity.
 - Strong daytime population and residential base.
 - Available now!

TRAFFIC COUNTS NE Sandy Blvd @ 22nd – 21,561 ADT ('20)
NE 20th @ Irving St – 17,538 ADT ('18)



Walk Score
93

Bike Score
100

Transit Score
71

ASHLEY HEICHELBECH
KATHLEEN HEALY
503.274.0211

ashley@cra-nw.com
kathleen@cra-nw.com

Commercial Realty Advisors NW, LLC
15350 SW Sequoia Pkwy, Suite 198
Portland, Oregon 97224
www.cra-nw.com
Licensed brokers in Oregon & Washington

DENIZEN | SITE IMAGES



RETAIL 1 & 2



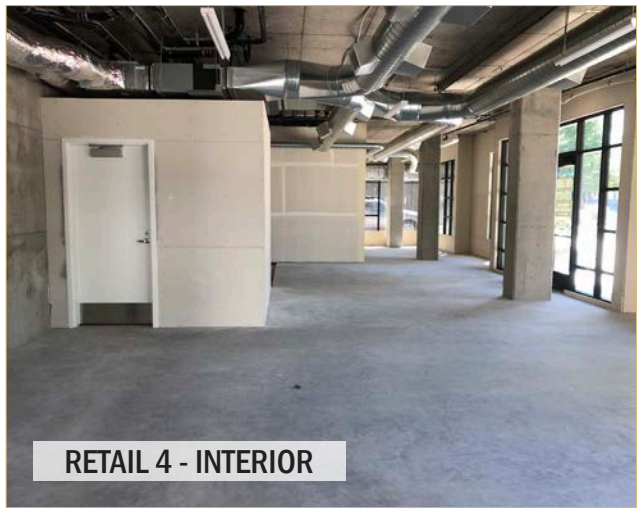
RETAIL 3



RETAIL 4



RETAIL 4 - INTERIOR



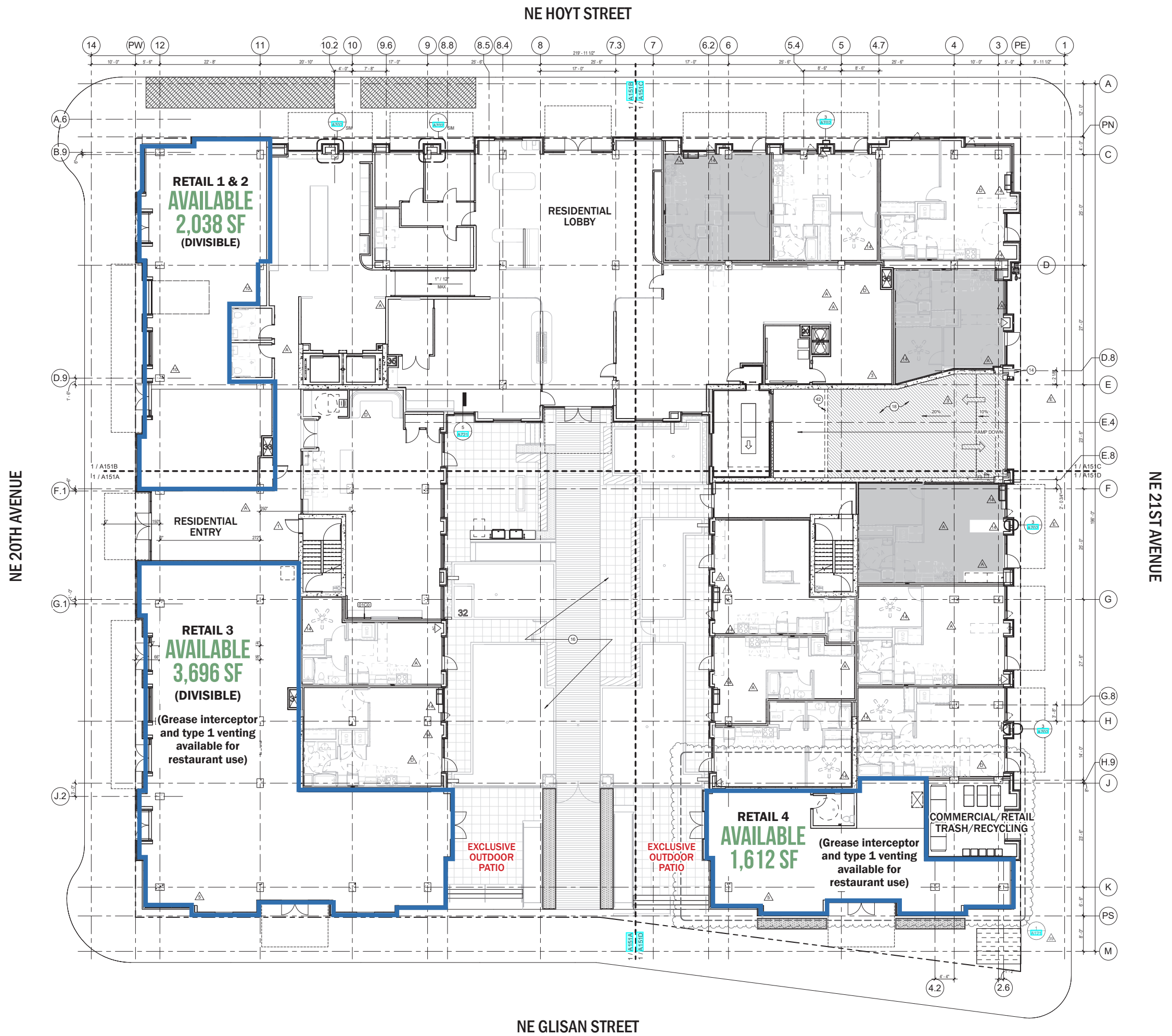
RETAIL 4 - INTERIOR



RETAIL 4 - EXCLUSIVE PATIO

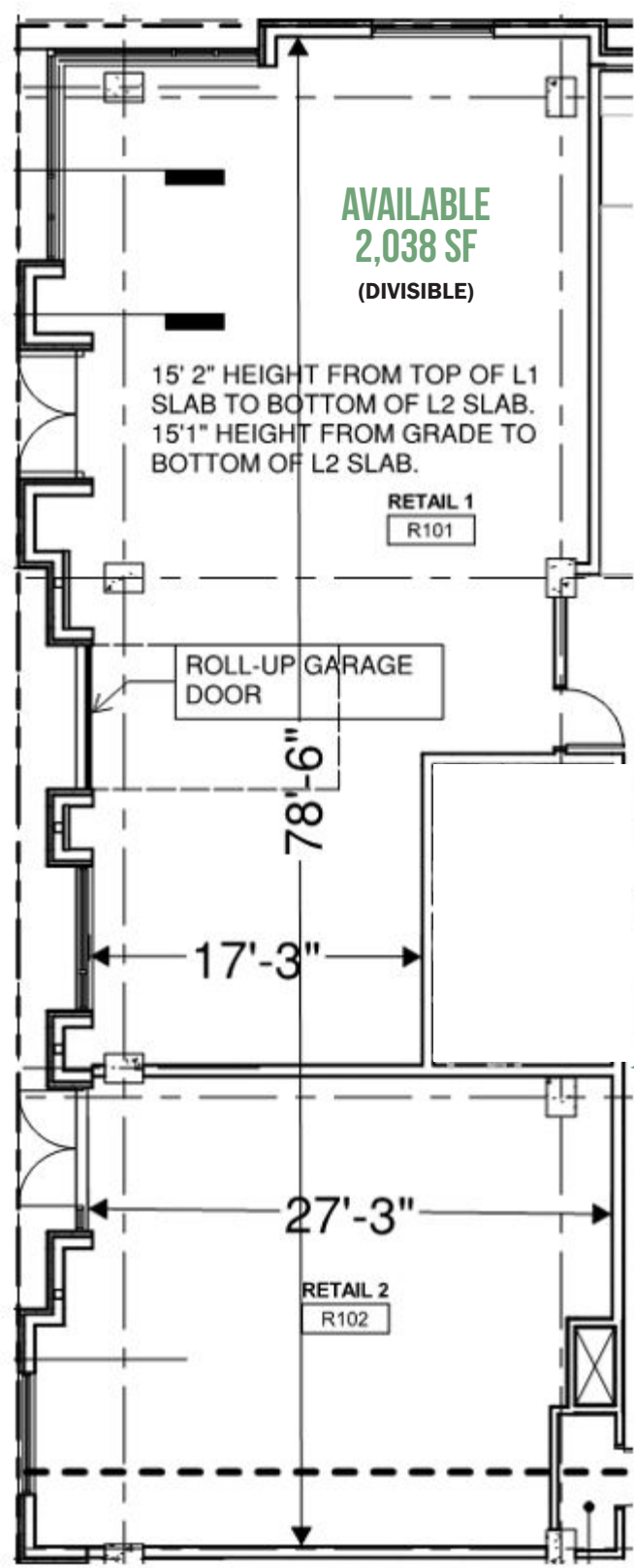


DENIZEN | SITE PLAN

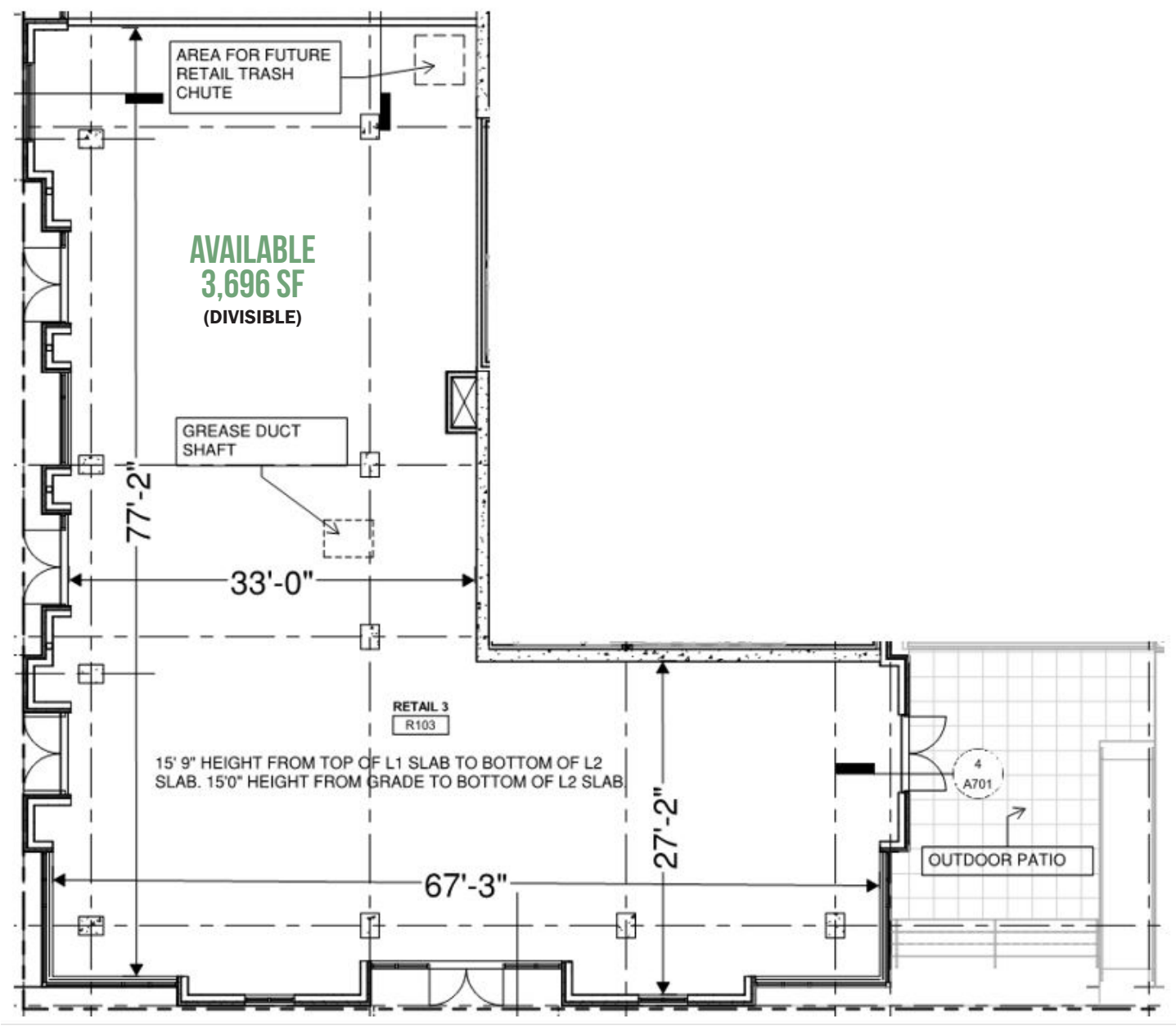


NE HOYT STREET

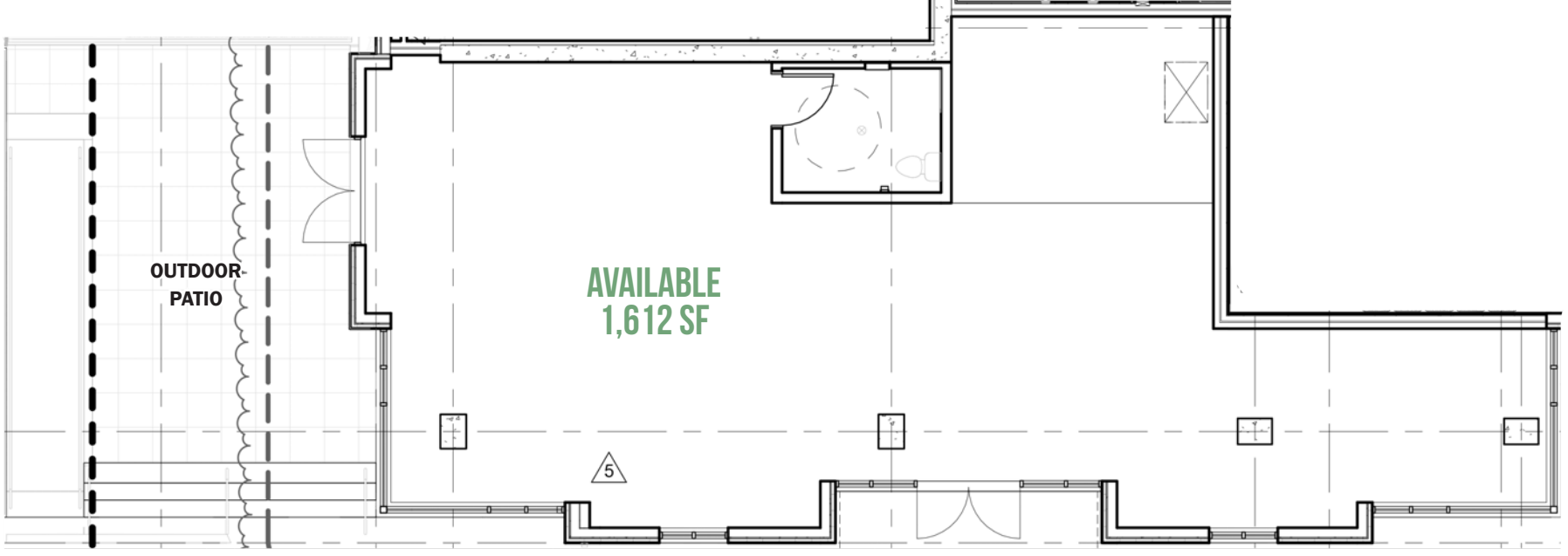
NE 20TH AVENUE



NE 20TH AVENUE



NE GLISAN STREET



NE 21ST AVENUE

NE GLISAN STREET

DENIZEN

518 NE 20TH AVENUE

PORTLAND, OR

DEMOGRAPHIC SUMMARY

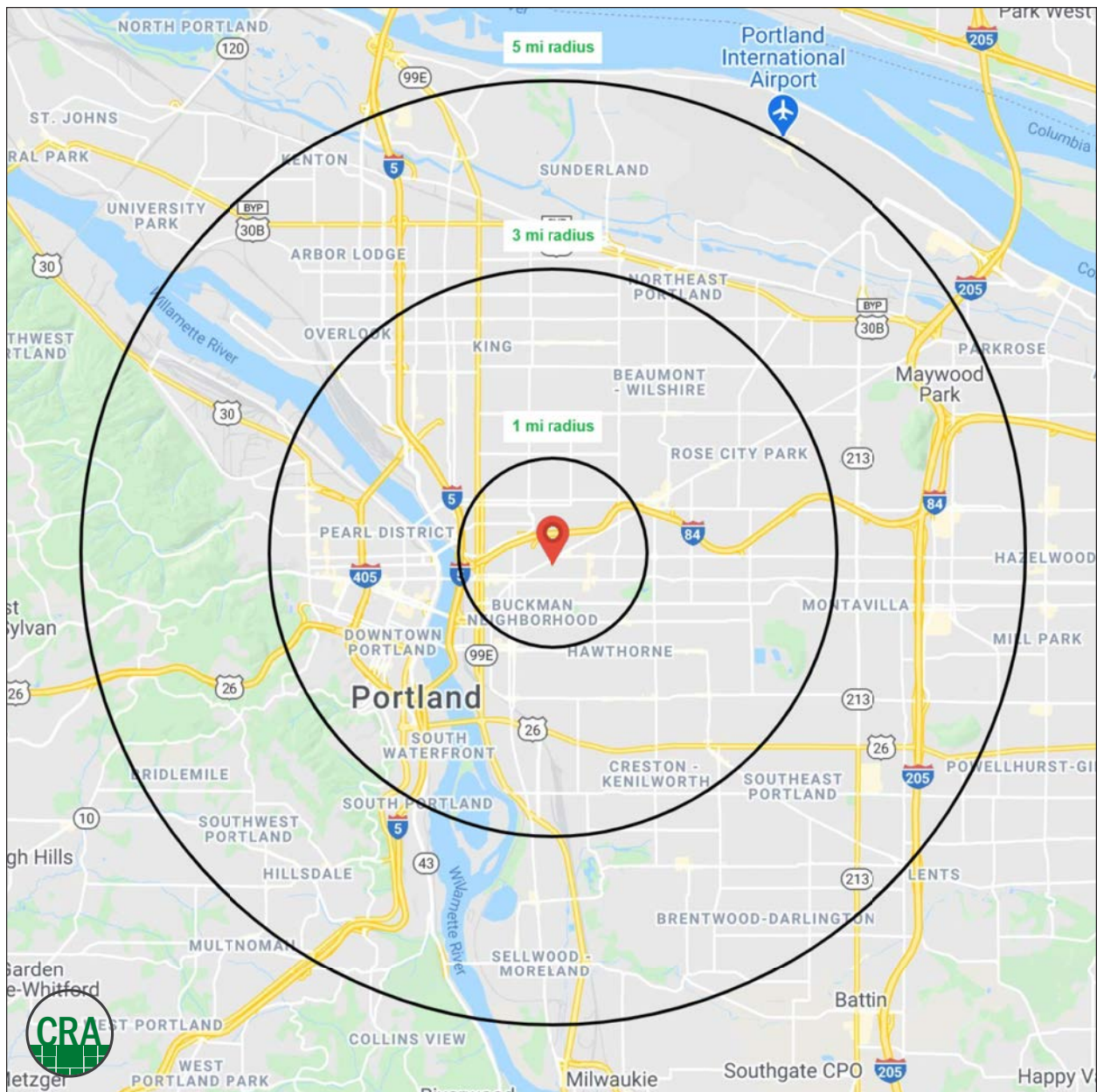
Source: Regis - SitesUSA (2020)	1 MILE	2 MILE	3 MILE
Estimated Population 2020	33,669	252,453	458,364
Projected Population 2025	34,785	259,965	471,356
Average HH Income	\$87,453	\$104,213	\$104,356
Median Home Value	\$527,479	\$485,048	\$447,073
Daytime Demographics 16+	50,205	313,954	487,346
Some College or Higher	86.7%	86.3%	81.9%

\$527,479

Median Home Value
1 MILE RADIUS

35.3

Median Age
1 MILE RADIUS



SUMMARY PROFILE

2000-2010 Census, 2020 Estimates with 2025 Projections

Calculated using Weighted Block Centroid from Block Groups



Lat/Lon: 45.5269/-122.6451

RS1

Denizen

Portland, OR 97232

1 mi radius 3 mi radius 5 mi radius

		1 mi radius	3 mi radius	5 mi radius
POPULATION	2020 Estimated Population	33,669	252,453	458,364
	2025 Projected Population	34,785	259,965	471,356
	2010 Census Population	26,032	210,523	398,335
	2000 Census Population	24,701	194,327	371,000
	Projected Annual Growth 2020 to 2025	0.7%	0.6%	0.6%
	Historical Annual Growth 2000 to 2020	1.8%	1.5%	1.2%
HOUSEHOLDS	2020 Median Age	35.3	36.5	37.3
	2020 Estimated Households	18,991	129,692	216,079
	2025 Projected Households	20,112	137,812	229,995
	2010 Census Households	13,918	102,882	179,960
	2000 Census Households	13,155	92,499	163,797
	Projected Annual Growth 2020 to 2025	1.2%	1.3%	1.3%
RACE AND ETHNICITY	Historical Annual Growth 2000 to 2020	2.2%	2.0%	1.6%
	2020 Estimated White	81.0%	77.6%	75.2%
	2020 Estimated Black or African American	4.9%	7.1%	6.8%
	2020 Estimated Asian or Pacific Islander	3.7%	6.0%	8.1%
	2020 Estimated American Indian or Native Alaskan	1.3%	0.9%	1.0%
	2020 Estimated Other Races	9.1%	8.4%	8.9%
INCOME	2020 Estimated Hispanic	13.7%	9.5%	9.7%
	2020 Estimated Average Household Income	\$87,453	\$104,213	\$104,356
	2020 Estimated Median Household Income	\$70,617	\$82,504	\$83,638
EDUCATION (AGE 25+)	2020 Estimated Per Capita Income	\$49,661	\$53,922	\$49,499
	2020 Estimated Elementary (Grade Level 0 to 8)	1.1%	1.5%	2.3%
	2020 Estimated Some High School (Grade Level 9 to 11)	1.7%	2.1%	2.9%
	2020 Estimated High School Graduate	10.4%	10.1%	12.9%
	2020 Estimated Some College	18.6%	18.0%	18.9%
	2020 Estimated Associates Degree Only	6.1%	6.1%	6.7%
	2020 Estimated Bachelors Degree Only	39.4%	36.0%	32.7%
BUSINESS	2020 Estimated Graduate Degree	22.7%	26.3%	23.5%
	2020 Estimated Total Businesses	3,834	24,955	36,887
	2020 Estimated Total Employees	41,085	241,035	350,451
	2020 Estimated Employee Population per Business	10.7	9.7	9.5
	2020 Estimated Residential Population per Business	8.8	10.1	12.4

This report was produced using data from private and government sources deemed to be reliable. The information herein is provided without representation or warranty.

For more information, please contact:

ASHLEY HEICHELBECH 503.490.7212 | ashley@cra-nw.com

KATHLEEN HEALY 503.880.3033 | kathleen@cra-nw.com



KNOWLEDGE

RELATIONSHIPS

EXPERIENCE



**COMMERCIAL
REALTY ADVISORS
NORTHWEST LLC**

Licensed brokers in Oregon & Washington

 15350 SW Sequoia Parkway, Suite 198 • Portland, Oregon 97224



www.cra-nw.com



503.274.0211

The information herein has been obtained from sources we deem reliable. We do not, however, guarantee its accuracy. All information should be verified prior to purchase/leasing. View the Real Estate Agency Pamphlet by visiting our website, www.cra-nw.com/home/agency-disclosure.html. CRA PRINTS WITH 30% POST-CONSUMER, RECYCLED-CONTENT MATERIAL.